

EXPORT

PRICES LIST 2017

Rev.20.03.17

BEAUTY LINE EQUIPMENTS & DEVICES

VAT & TRANSPORT CHARGE EXCLUDED



CODE AR82

PER4MER

4 Technologies in a single Device

Vaccum Endodermic Massage - Cellulite Modeling and Elimination - Anti-Age Face Radiofrequency Body

Cellular-Drainage Oxygenation - Cryo Treatment with "Cold Cold" Technique



CODE AR 83 HP EFFIMERA HAIR REMOVAL DIODE LASER X-HP 1.2

NEW : HAIR REMOVAL DIODE LASER HP 1200 WATT HIGH PERFORMANCE



CODE AR75.1 EFFIMERA HAIR REMOVAL DIODE LASER HP

AR 75 EFFIMERA LASER HP is the innovative laser that can be used also in aesthetics for epilation treatments. Its features make it suitable for use in all body areas (except eye contour) for all types of skin (also on V and VI phototypes) and for each hair color (excluding white hair). High power diode laser emits an energy source on a large surface with a homogeneous beam profile at a length of approx. 808nm wave which acts selectively on the hair follicle for optimal light release without loss of energy. The laser beam is able to cross the skin and reach hair pigments within the hair bulbs, resulting in increased Temperature causes the destruction of the germinal cells of the bulb itself, thus obtaining the effect of a progressively definitive depilation (the principle of selective photothermolysis) painless and noninvasive. **IL HANDLE:** The **LASER HIGH POWER** handpiece is designed to ensure maximum safety and ease of use. The sapphire crystal drives the light of the dozens of LED transmitters, generating a monochrome radius, reaching the spot glass. The spot surface of the spot has a size of 11x11mm so treatment can be performed at high speed. The sophisticated crystal cooling system integrated in the handpiece allows to operate with values of professional fluids, thus preserving the integrity of the skin and the Risk of burns, achieving highly performing and comfortable results for the customer.



CODE AR 53 EFFIMERA IPL CRYO TABLE TOUCH SCREEN

The EFFIMERA IPL TOUCH SCREEN CRYO apparatus is fitted with an ample 5.7" graphic display which, enriched with touch-screen technology, makes human-machine interaction simpler and offers easy access to the various applications which can be set. The interface with icons and the graphic animations guide the operator step-by-step, considerably simplifying the programming procedure. Each single treatment parameter can be programmed simply at the "touch" of a finger. An advanced electro-optic technology is exploited for the photodepilation treatment, commonly called IPL (Intensive Pulsed Light), i.e. a system able to generate an intense and instantaneous light impulse which gives off a large amount of energy.

Since the luminous energy, attracted by the melanin in the hair, reaches the hair bulb, destroying it if it is in the active stage (ANAGEN, i.e. growth), the energy is sent in the form of light impulses, "flashed" from the handle.

EFFIMERA IPL TOUCH SCREEN CRYO uses a XENON 500w power lamp which can supply up to a maximum of 26J/cm². The handle provided allows treatment of an area of about 13 cm², reducing the length of the sessions and, therefore, the number of flashes required to complete the treatment. Thanks to it being highly tolerated and to its efficacy, the IPL photodepilation treatment can be applied to most body areas, both women and on men. In fact, in a few minutes it is possible to depilate very wide areas or, with the help of an area reducer, optimally put the finishing touches to circumscribed areas, such as the upper lip or the chin area. On completion of the depilation session the fallen hairs can be removed with a spatula, a small brush or using tonic to cleanse the part treated, whereas the remaining down will fall out spontaneously within one or two days. After about 20-25 days the hairs whose bulbs were not in the active stage at the time of the previous treatment will grow, now ready to be treated by a second application.

Unlike other laser apparatus, our apparatus allows efficacious elimination of superfluous hairs, working without any risk for the customers.

A further innovation introduced with IPL CRYO TOUCH SCREEN consists of the cooling device, based on the peltier cell technology, which offers various functions connected with the different types of treatment. The temperature, set by the operator, is kept constant over the plate of the CRYO handle by the liquid cooling circuit which allows the area to be treated to be cooled considerably before the flashes (so as to increase tolerance and therefore increase the power used), or it can decongest the issue treated after the flashes.



CODE AR 58 EFFIMERA IPL CRYO TOUCH SCREEN TROLLEY

The EFFIMERA IPL TOUCH SCREEN CRYO apparatus is fitted with an ample 5.7" graphic display which, enriched with touch-screen technology, makes human-machine interaction simpler and offers easy access to the various applications which can be set. The interface with icons and the graphic animations guide the operator step-by-step, considerably simplifying the programming procedure. Each single treatment parameter can be programmed simply at the "touch" of a finger. An advanced electro-optic technology is exploited for the photodepilation treatment, commonly called IPL (Intensive Pulsed Light), i.e. a system able to generate an intense and instantaneous light impulse which gives off a large amount of energy.

Since the luminous energy, attracted by the melanin in the hair, reaches the hair bulb, destroying it if it is in the active stage (ANAGEN, i.e. growth), the energy is sent in the form of light impulses, "flashed" from the handle.

EFFIMERA IPL TOUCH SCREEN CRYO uses a XENON 500w power lamp which can supply up to a maximum of 26J/cm². The handle provided allows treatment of an area of about 13 cm², reducing the length of the sessions and, therefore, the number of flashes required to complete the treatment. Thanks to it being highly tolerated and to its efficacy, the IPL photodepilation treatment can be applied to most body areas, both women and on men. In fact, in a few minutes it is possible to depilate very wide areas or, with the help of an area reducer, optimally put the finishing touches to circumscribed areas, such as the upper lip or the chin area. On completion of the depilation session the fallen hairs can be removed with a spatula, a small brush or using tonic to cleanse the part treated, whereas the remaining down will fall out spontaneously within one or two days. After about 20-25 days the hairs whose bulbs were not in the active stage at the time of the previous treatment will grow, now ready to be treated by a second application.

Unlike other laser apparatus, our apparatus allows efficacious elimination of superfluous hairs, working without any risk for the customers.

A further innovation introduced with EFFIMERA IPL TOUCH SCREEN CRYO consists of the cooling device, based on the peltier cell technology, which offers various functions connected with the different types of treatment. The temperature, set by the operator, is kept constant over the plate of the CRYO handle by the liquid cooling circuit which allows the area to be treated to be cooled considerably before the flashes (so as to increase tolerance and therefore increase the power used), or it can decongest the issue treated after the flashes.



CODE AR74 ACQUA IPL TOUCH SCREEN 10,4" TABLE CASE

CODE AR74 ACQUA IPL TOUCH SCREEN 10,4" TROLLEY

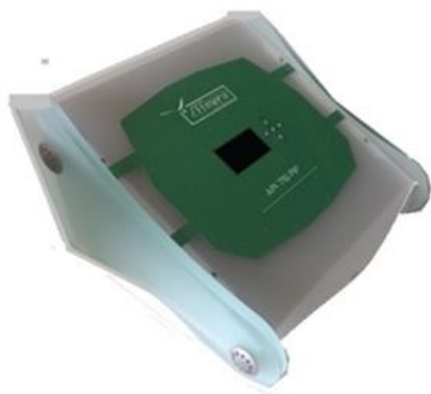
The IP74 AR74 is equipped with a large 10.4 "graphic display that, enhanced by the touch-screen technology, offers easy access to the various

Settable applications. The icon interface and graphic animations guide the operator step by step greatly simplifying the programming process. Photophile treatment is exploited by the state of the art electro-optic technology commonly known as IPL (Intense Pulsed Light), a system capable of generating an intense and instantaneous light impulse that yields a large amount of energy. IPL AR74 employs a XENON lamp with high water-cooled power, so it is possible to keep a constant flash output (1 flash per second), the flux delivered up to 26 Joules / cm². Another novelty introduced in IPL AR74 consists of the PDC (Photo Dermal Control) device, ie with a sensor placed inside the handpiece, it is possible to perform a skin phototype recognition test directly on the client's skin.

Physical characteristics

Filter wavelength: 600 ÷ 1100 nm Impulse duration: 10 ÷ 20 ms Pulse interval: 30 ÷ 100 ms consecutive pulses: 1 ÷ 5

Density delivered: adjustable up to 26 J / cm² Crystal Dimension: 50 x 12 mm



CODE AR76 Effimera RF RADIOFREQUENCY TABLE CASE

CODE AR 76 Effimera RF RADIOFREQUENCY TROLLEY

RF Effimera uses the Monopolar Capacitive RF Frequency System, designed to meet the high requirements of professional aesthetic centers, is easy and intuitive to use and allows exceptional anti-aging results on both the face and the body. The graphic display Backlit LCD offers easy access to various settable applications, icon interface and graphic animations guide the operator step by step further simplifying the easy programming process. Collagen is the main protein of connective tissues and accounts for 25% of the Total mass. It is one of the longest fiber protein structures. It is strong and strong, possesses a great ability to stretch and return to its original condition, it is the main ingredient in cartilage, ligaments and tendons. Its degradation or insufficient renewal occurs with the appearance of the first wrinkles and then with a progressive loss of skin tonicity and contributes to the aging of the person; Has been undergoing a physiological wear process since the age of twenty. In RF Effimera treatments, radio frequency, which is an electromagnetic field with a frequency of 420KHz (for facial treatments) and 405KHz (for body treatments) penetrates into the epidermis, dermis and hypodermis through the aid of special accessories generating A localized increase in temperature and baseline metabolism so as to intensify blood inflow in the stressed area (endogenous diathermia).



CODE AR 78 EFFIMERA OXYGEN SKIN

Oxygen Case is a device that "aspires air" from the environment, compresses and "pushes" the product into the cellular lumen. The main benefit of plasma (also called electroclimate) is to obtain an important bactericidal effect that allows the product to be sprayed through a mixture of pure air and to obtain all the benefits of ions on the skin, considering that one of the adverse effects of excessive Bacterial charge causes inflammation and therefore premature aging. Through EFFIMERA OXYGEN SKIN it is possible to convey deeply the sera prepared specially so that they can achieve extraordinary results

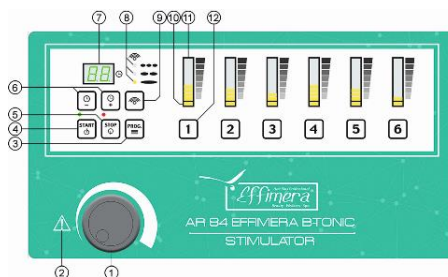


CODE AR77 Effimera AUTOCLAVE

Distilled water autoclaves rely on their sterilizing function exclusively and exclusively on perfect heat distribution

By the action of saturated vapor that implements heat exchange with the material to be sterilized.

The latent evaporative heat is extremely hot. 539 KCAL / KG at 100 ° C -526 at 120 ° C -519 ° 130 °



CODE AR84 Effimera B-TONIC ELECTRO STIMULATOR

Treatment with AR 84 EFFIMERA B-TONIC ELECTRO-STIMULATOR will be a pleasant and relaxing alternative to the fatigue of the gyms thanks to a total approach to every kind of aesthetic problem; Working times are very low and improvements for some areas of the body are already evaluable after the first sessions. All the various muscle groups can be stimulated to increase the mass (eg in the case of hypotrophy resulting from immobilization of a limb), firming, slimming, toning, shaping, draining and improving peripheral walking and circulation:

- Slimming and slimming effect on localized bearings and accumulations of toning and firming musculature (inner thigh, inner arms, abdomen, buttocks, chest, breast, back)
- body remodeling (increased body mass)
- Prevention and anti-cellulite treatment (draining - oxygenating - reducing effect): the particular frequency used has a beneficial effect on venous return, even in the deepest layers



CODE AR 52 EFFIMERA PRESSO MASSAGE TOUCH SCREEN TABLE

CODE AR 52+AR47.1 EFFIMERA PRESSO MASSAGE TOUCH SCREEN +BANDS

CODE AR 52+AR48.1 EFFIMERA PRESSO MASSAGE TOUCH SCREEN +LEG BANDS

There are many pressomassage applications, and in particular it can be used to combat stagnation of the blood, swollen legs, varicose veins and panniculus adiposus, as well as to treat blemishes caused by cellulite.

EFFIMERA TOUCH PRESS is fitted with a large 5,7" graphic display which, enriched by touch-screen technology, simplifies human-machine interaction and offers easy access to the various applications which can be set. The interface with an icon guides the operator step by step, considerably simplifying the programming procedure. Just a "touch" of a finger and it is possible to programme each individual parameter of the treatment, for example: the inflation time, the pressure in the sectors, and the inflation and deflation sequences of these. Furthermore, the internal microprocessor ensures great versatility - the operator can select the settings desired manually or can use stored programmes, with predefined settings, specific to the various treatments.

Accessories for EFFIMERA PRESSO MASSAGE CODE AR 52

Accessories: power chord; bands full set CODE AR 47.1

Accessories: power chord; leg bands full set CODE AR 48.1

Accessories : power chord; leg bands full set CODE AR 49.1

AVAILABLE WITH: CODE AR 47.1 ,AR48.1, AR 49.1





CODE AR 54 EFFIMERA PRESSO MASSAGE TOUCH SCREEN TROLLEY

CODE AR 54+AR47.1 EFFIMERA PRESSO MASSAGE+ T. SCREEN+ TROLLEY + BANDS

CODE AR 54+AR48.1 EFFIMERA PRESSO MASS+T.SCREEN +TROLLEY +LEG BANDS

There are many pressomassage applications, and in particular it can be used to combat stagnation of the blood, swollen legs, varicose veins and panniculus adiposus, as well as to treat blemishes caused by cellulite.

EFFIMERA TOUCH PRESS is fitted with a large 5,7" graphic display which, enriched by touch-screen technology, simplifies human-machine interaction and offers easy access to the various applications which can be set. The interface with an icon guides the operator step by step, considerably simplifying the programming procedure. Just a "touch" of a finger and it is possible to programme each individual parameter of the treatment, for example: the inflation time, the pressure in the sectors, and the inflation and deflation sequences of these. Furthermore, the internal microprocessor ensures great versatility - the operator can select the settings desired manually or can use stored programmes, with predefined settings, specific to the various treatments.

Accessories for EFFIMERA PRESSO MASSAGE CODE AR 52

Accessories: power chord; bands full set CODE AR 47.1

Accessories: power chord; leg bands full set CODE AR 48.1

Accessories : power chord; leg bands full set CODE AR 49.1

AVAILABLE WITH: CODE AR 47.1 ,AR48.1, AR 49.1





CODE AR64 EFFIMERA AIR PRESSOMASS

CODE AR64+AR31.1 EFFIMERA AIR PRESSOMASS + BANDS

CODE AR64+32.1 EFFIMERA AIR PRESSOMASS + LEGS BANDS

The new interface introduced in EFFIMERA AIR PRESSOMASS, which exploits the innovative graphic display, guides the operator step by step, thereby considerably simplifying the programming procedure. The electronic control of the various functions shown on the display is managed by a microprocessor which guarantees great versatility. In fact, it is possible to programme each individual parameter on the treatment, i.e. the inflation time, the pressure in the various sectors, as well as the inflation and deflation sequence of the latter. Setting can be carried out manually or by using preset and stored programmes.

The pressure of each individual output is controlled by a pressure sensor. Furthermore, EFFIMERA AIR PRESSOMASS is fitted with a safety device which intervenes when there are excessive pressure in the pneumatic circuit.

A Accessories: power chord; leg bands full set CODE AR 48.1

Accessories : power chord; leg bands full set CODE AR 49.1

Accessories: power chord; bands full set CODE AR 47.1

AVAILABLE WITH: CODE AR47.1, CODE AR32.1, CODE AR36.1





CODE AR31 EFFIMERA AIR PRESSOMASSAGE

8 CHANNELS WITH BANDS OR LEG BANDS

CODE AR31+AR34.1 EFFIMERA 8canali PRESSOMASS +FASCE

CODE AR31+AR36.1 EFFIMERA 8canali PRESSOMASS +GAMBALI

The apparatus allows applications of pressomassage. In particular, it can be used against blood stasis, swelling in the legs, teleangectases, varices, pains in the legs due to bad venous or lymphatic circulation and panniculosis.

Accessories: power chord; bands full set CODE AR 47.1

Accessories: power chord; leg bands full set CODE AR 48.1

Accessories : power chord; leg bands full set CODE AR 49.1





CODE AR07 EFFIMERA TABLE VAPORISER W/ ARM

The apparatus is used for preparation of deep facial cleansing treatment, exploiting the dilatory effect of the steam, which can be aromatised or enriched with ozone.



CODE AR07.1 EFFIMERA TABLE VAPORISER

The apparatus is used for preparation of deep facial cleansing treatment, exploiting the dilatory effect of the steam, can be aromatised enriched with ozone.



CODE AR05 EFFIMERA TABLE VAPORISER W/ FLEXIBLE ARM

The apparatus is used for preparation of deep facial cleansing treatment, exploiting the dilatory effect of the steam, which can be aromatised or enriched with ozone.



CODE AR03 EFFIMERA TABLE VAPORISER W/ ARM

The apparatus is used for preparation of deep facial cleansing treatment, exploiting the dilatory effect of the steam, can be aromatised enriched with ozone.



CODE AR06 EFFIMERA VAPORISER ON STAND W/ FLEXIBLE ARM

The apparatus is used for preparation of deep facial cleansing treatment, exploiting the dilatory effect of the steam, can be aromatised enriched with ozone.



CODE AR04 EFFIMERA VAPORISER ON STAND W/ ARM

The apparatus is used for preparation of deep facial cleansing treatment, exploiting the dilatory effect of the steam, can be aromatised enriched with ozone.



CODE AR08.1 EFFIMERA VAPORISER ON STAND

The apparatus is used for preparation of deep facial cleansing treatment, exploiting the dilatory effect of the steam, can be aromatised enriched with ozone



CODE AR08 EFFIMERA VAPORISER ON STAND W/ ARM

The apparatus is used for preparation of deep facial cleansing treatment, exploiting the dilatory effect of the steam, can be aromatised or with ozone



CODE AR63 EFFIMERA DEPIL SYSTEM

The Effimera technology applied to the apparatus allows the operator to set perfect parameters and regulations to guarantee prestigious treatments and highly professional results. The Perfect System depilator is fitted with an exclusive system which, by using application times in hundredths of seconds, offers a comfortable depilation treatment which becomes progressively definitive over all areas of the body. Depil System means electro depilation can be obtained using two distinct techniques: the Flash method and the Blend method. The Flash operating method exploits the passage of current at high frequency to produce intense heat in the tissues near the pointed electrode (thermolysis). The rapid rise in temperature produces electro coagulation which permanently damages the air follicle, progressively causing its necrosis. The main advantage of this technique, which exploits the maximum precision of the microprocessor, is to allow an intense current to pass for a very short time (1/100 of second), with the aim of offering maximum comfort even in people who are highly sensitive or those who cannot tolerate galvanic current. The Blend method combines the efficacy of a high frequency current with that of a galvanic current (electrolysis). In some people treated, who either have very strong hairs or deformed follicles, it will not be possible to obtain satisfactory results with thermolysis alone and this is why the Perfect System depilator can also exploit galvanic current. By applying a weak direct current to the pointed electrode inserted in the follicle of a hair, chemical decomposition of the salt water is obtained, producing caustic soda which damages the geminating tissues of the hair, preventing it from growing again.



CODE AR23 EFFIMERA DEPILATOR

WITH ELECTROCOAGULATING NEEDLE

The apparatus allows definitive depilation treatments to be carried out on all areas of the body, including the face. Elimination of superfluous hair is carried out by means of an electric discharge to the germinal papilla of the hair.



CODE AR63 EFFIMERA WAX HEATER PROF 250

TEMPERATURE CONTROL MIN.ORDER 50PCS

Effimera Wax Heater Prof 250 Accessories Power Cord, Hair Removal machine, Technical data: Voltage -240V Power 50W



CODE AR65 EFFIMERA WAX HEATER PROF 400

TEMPERATURE CONTROL MIN.ORDER 50PCS

Effimera Wax Heater Prof 400 Accessories Power Cord, ,cover Technical data: Voltage -240V Power 50W



CODE AR64 EFFIMERA WAX HEATER PROF800

TEMPERATURE CONTROL MIN.ORDER 50PCS

Effimera Wax Heater Prof 800 Accessories Power Cord, ,cover Technical data: Voltage -240V Power 50W



CODE AR68EFFIMERA SET 3 SUPPORT& 3 REFILS **MIN.ORDER 50PCS**

Technical data: Voltage -240V Power 50W



CODE AR69 EFFIMERA SINGLE ELECTRONIC REFIL WAX HEATER

Technical data: Voltage -240V Power 30W

TEMPERATURE CONTROL, WAX LEVEL LED CONTROL **MIN.ORDER 50PCS**

CODE AR68 EFFIMERA ELECTRONIC REFIL WAX HEATER LEDCONTROL,WAX LEVEL **MIN.ORDER 50PCS**



CODE AR70 EFFIMERA SINGLE REFIL WAX HEATER **MIN.ORDER 50PCS**

Technical data: Voltage -240V Power 30W



CODE AR66 EFFIMERA SINGLE REFIL WAX HEATER

Technical data: Voltage -240V Power 30W

WAX LEVEL CONTROL **MIN.ORDER 50PCS**



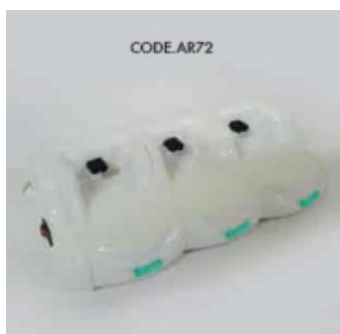
CODE AR71 EFFIMERA WAX HEATER SUPPORT SINGLE **MIN.ORDER 50PCS**

Technical data: Voltage -240V



CODE AR73 EFFIMERA WAX HEATER SUPPORT DOUBLE **MIN.ORDER 50PCS**

Technical data: Voltage -240V



CODE AR72 EFFIMERA WAX HEATER SUPPORT TRIPLE **MIN.ORDER 50PCS**

Technical data: Voltage -240V



12 months WARRANTY from any manufacturing defects

Repairs and replacements under warranty are made at our discretion

Devices returns transport in your charge

Effimera Beauty Wellness Spa

reserves the right to change the technical data of its production

without prior notice to customers.

PACKING AT COST - GOODS: EX WORKS



Effimera Beauty Wellness Spa Italy

Ph +39 338 8825819

www.effimera.eu

direzione@effimera.eu

[skype:effimerabeautywellness](https://www.skype.com/en/contacts/effimerabeautywellness)